

A background network diagram consisting of a complex web of thin grey lines connecting various nodes. The nodes are represented by small grey circles, some of which are larger and have concentric circles around them, suggesting a central or more significant node in the network. The overall structure is organic and interconnected, filling the right and bottom portions of the page.

New Jersey's Guide to the

# MANUFACTURING INDUSTRY

choose  
newjersey

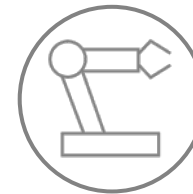


# A LEADER IN ADVANCED MANUFACTURING

Tech-driven competitiveness



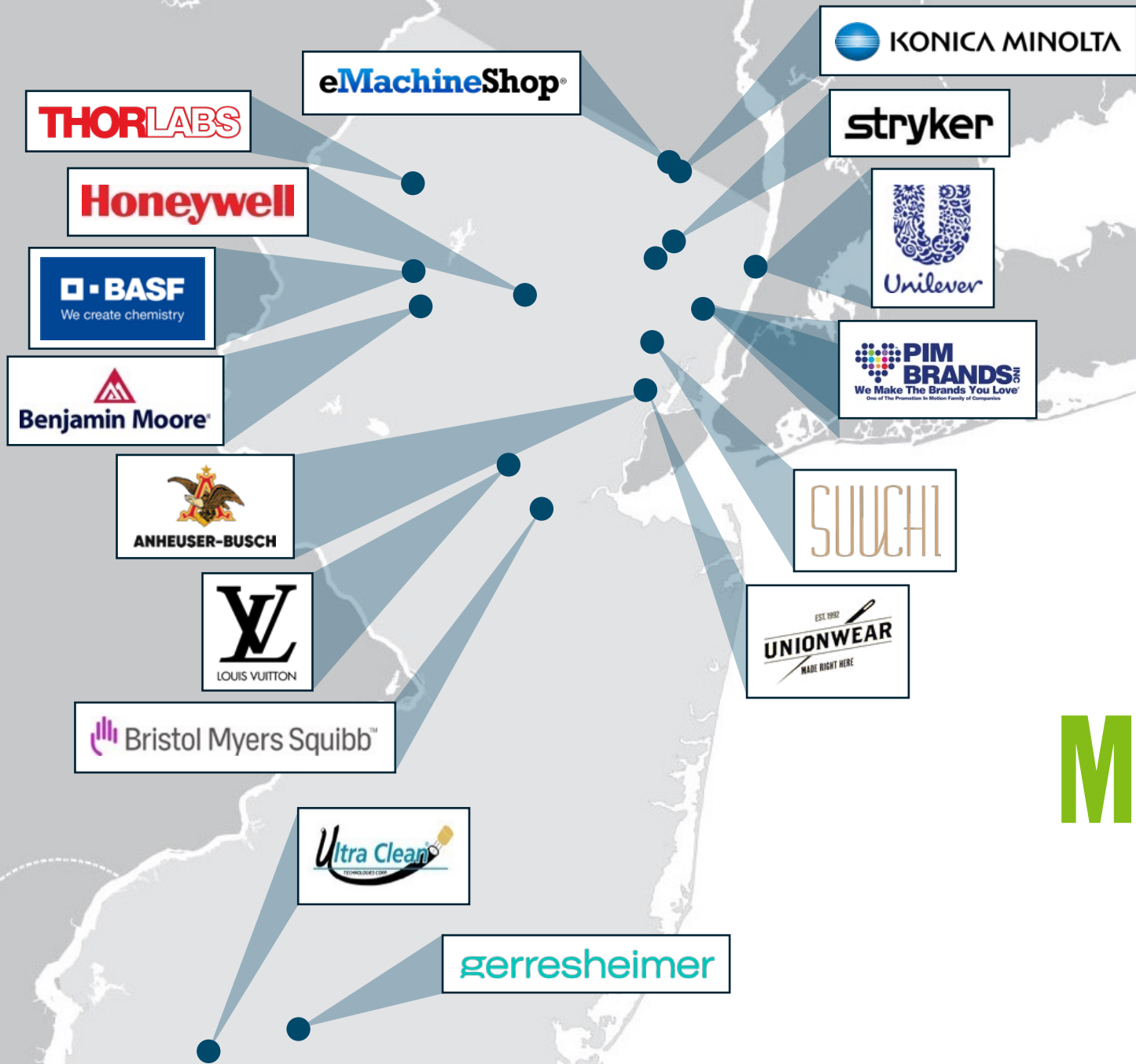
#5 STATE FOR CHEMICAL  
MANUFACTURING



2/3 OF MANUFACTURING  
IN THE STATE IS  
CLASSIFIED AS **ADVANCED**



236,000 MANUFACTURING  
EMPLOYEES



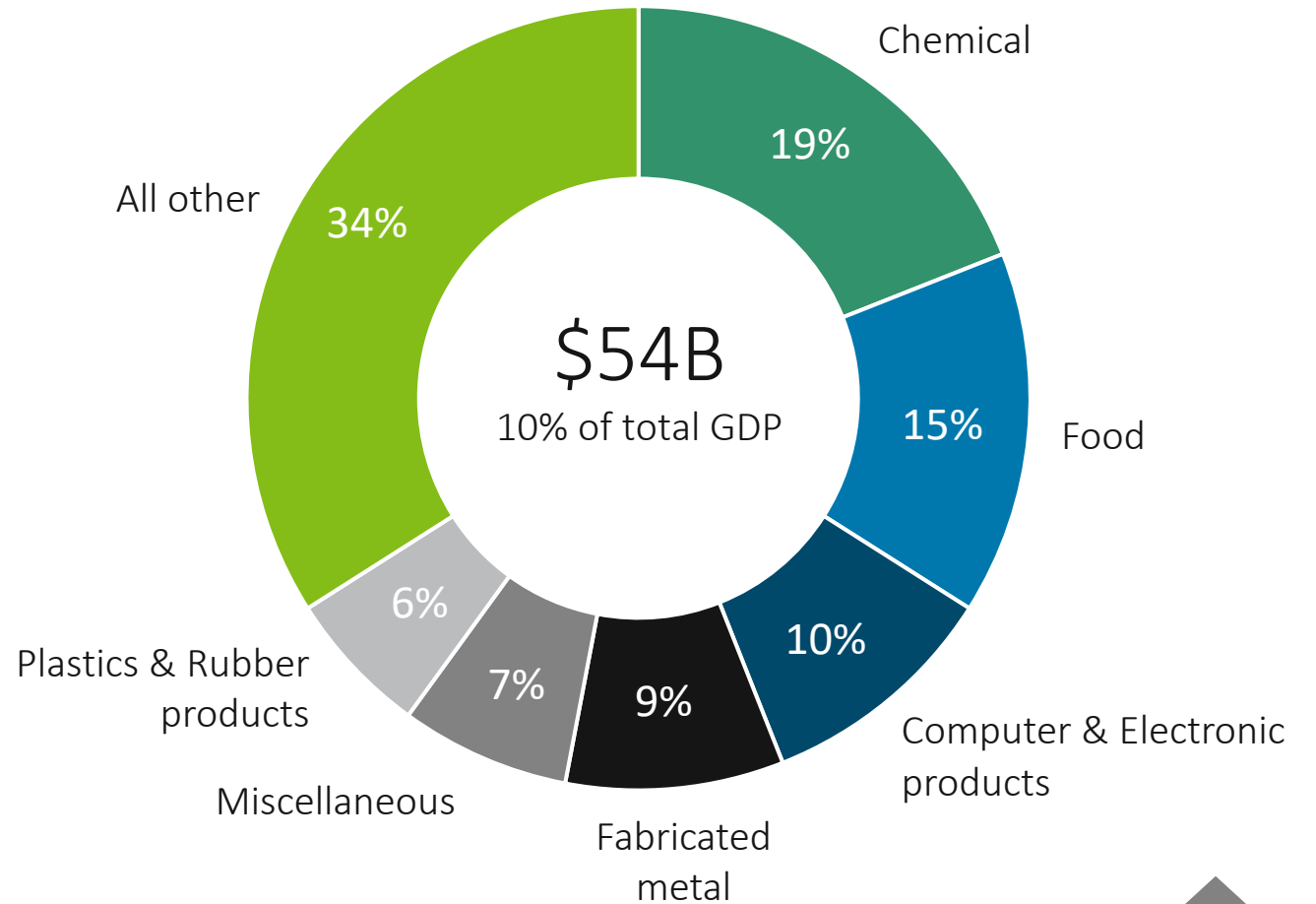
# TOP ADVANCED MANUFACTURING COMPANIES

Join your peers growing here

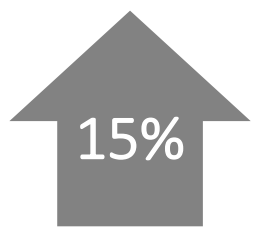
# MADE IN NEW JERSEY

You name it, we make it

New Jersey manufacturing by production



GDP growth in New Jersey advanced manufacturing since 2013

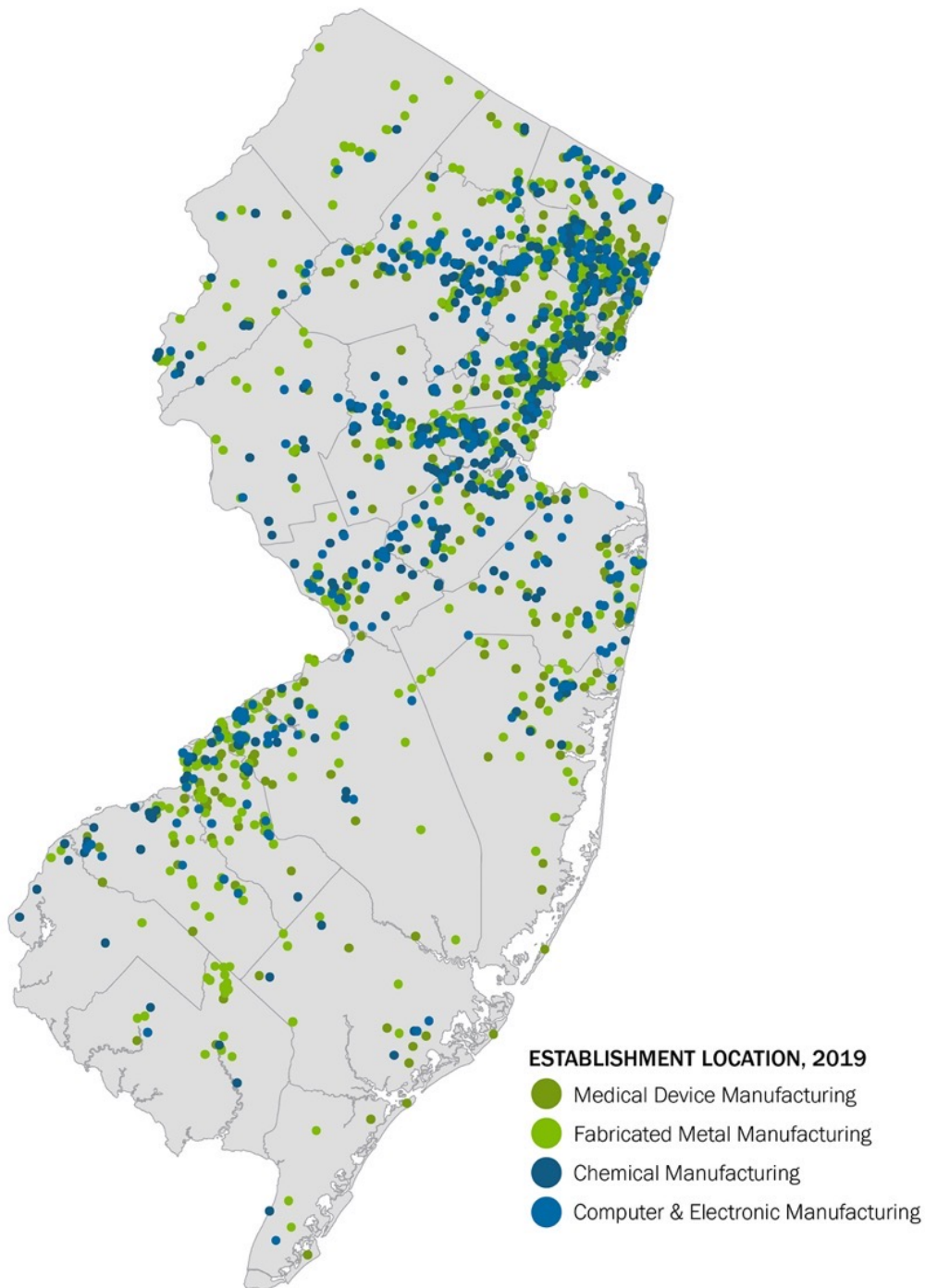


# SUPPLY CHAIN

Manufacturing has been a major contributor to New Jersey's economy for close to 200 years. Today, it remains at the forefront of innovation driving the Fourth Industrial Revolution. Over 2,500 advanced manufacturers operate in New Jersey from large pharmaceutical companies to small machine shops. Our state is well-equipped to help you scale operations rapidly, with in-state supply chain and industry resources.

Number of manufacturing companies by subsector:

- Aluminum fabricators: 40
- Automotive parts: 85
- Batteries: 65
- Bolt, nut, screw, rivet, and washer: 24
- Broadcasting and wireless comm: 134
- Chemical: 546
- Drives: 8
- Electronics: 510
- HVACS: 133
- Machine shops: 482
- Metal fabricators: 908
- Mining: 12
- Motors: 131
- Precision turned product: 45
- Printed circuit boards: 50





# INFRASTRUCTURE

New Jersey moves goods like no other state



**PORT OF NEW YORK/  
NEW JERSEY**

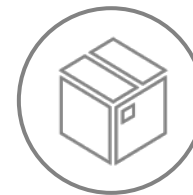
Largest maritime center on the East Coast, #2 busiest port in North America



**2,900 MILES OF INTERSTATES  
AND HIGHWAYS**



**HIGHEST RAILROAD DENSITY  
IN THE U.S.**



**5 STRATEGICALLY LOCATED  
FOREIGN TRADE ZONES**



**NEWARK**

Train times from Newark Penn Station

# LOCATION

The market access and convenience forward-thinking companies need

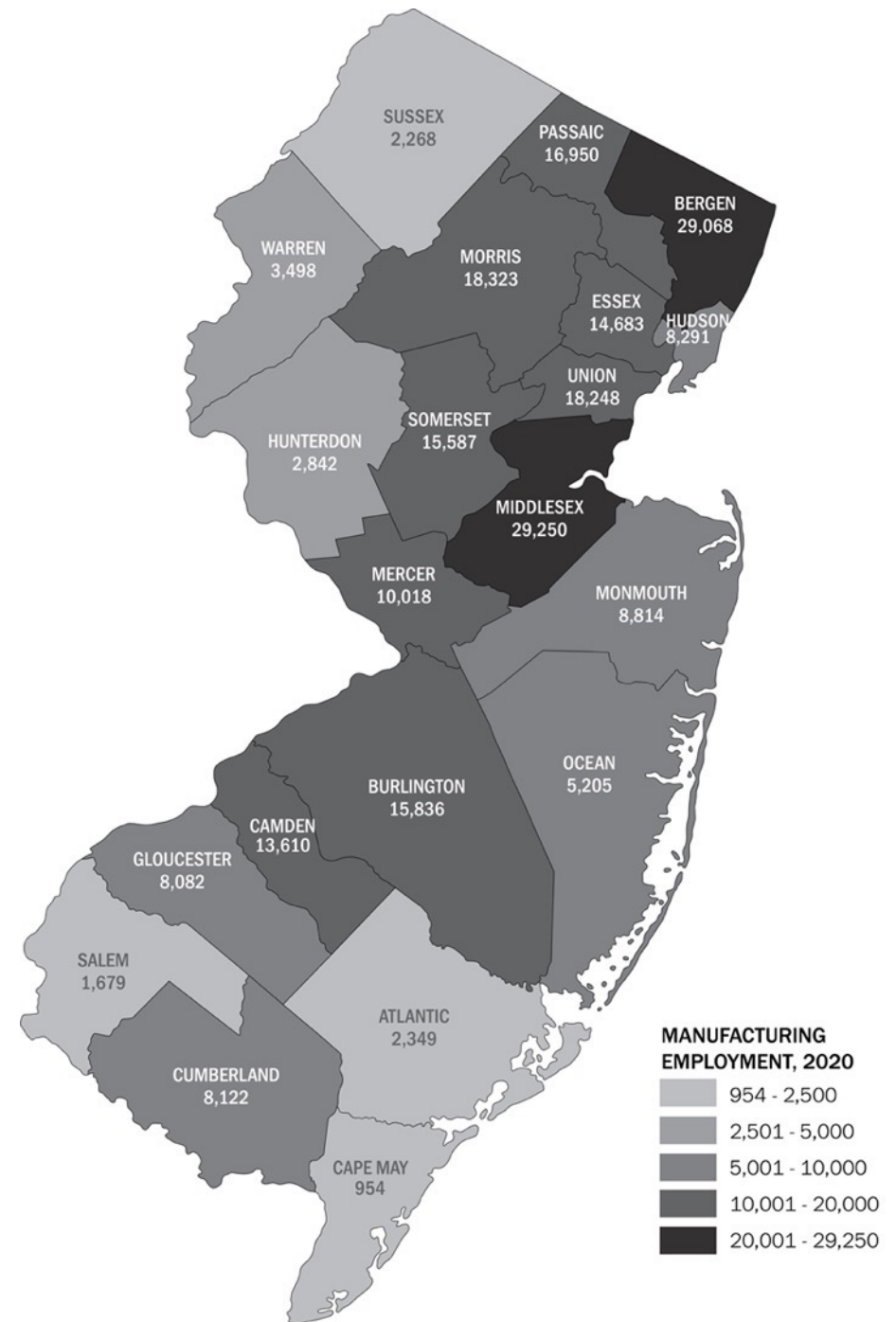
**36M** Consumers within 150 miles/241 km

**\$3T** In GDP within 150 miles/241 km

# HIRING MADE EASY

Tap into New Jersey's highly skilled workforce

Manufacturing in many of New Jersey's less populated counties makes up a larger percentage of total private sector employment (for example, 18% in Cumberland County). We are home to the highest concentration of scientists and engineers per square mile in the U.S. and 42% of New Jersey's population has earned a Bachelor's degree or higher.



# WORKFORCE DEVELOPMENT

Bridging the gap between education and skilled workers



## ADVANCED MANUFACTURING AND MECHATRONICS TRAINING PROGRAM

NJIT provides hands-on learning in mechanical and electrical assembly and Programmable Logic Controllers (PLC) programming.

Certificates of completion are available from NJIT Makerspace.



## COLLABORATION TO MEET WORKFORCE DEMAND

NJ Pathways to Career Opportunities was launched in 2021 by NJ Community Colleges (NJCC) and NJ Business & Industry Association (NJBIA) to build industry-driven education and training pathways.

It has four industry clusters including manufacturing production and engineering and 10 Centers of Workforce Innovation.



## NEW ADVANCED MANUFACTURING AND ENGINEERING CENTER

CCM offers Associate Degrees in Electronics Engineering Technology, Engineering Science, and Mechanical Engineering Technology.

Training in AutoCAD, Six Sigma, and supply chain management are offered.

# BUSINESS ASSISTANCE

The New Jersey Economic Development Authority provides the support for your business to thrive

## BOND FINANCING

NJEDA offers additional long-term financing to manufacturing firms through the issuance and sale of tax-exempt bonds. The proceeds of these bond sales can be used by manufacturers for a multitude of purposes including to finance capital improvements, for land and building acquisitions, and for working capital or debt refinancing.

## BROWNFIELD LOANS PROGRAM

NJEDA provides financing to fund remediation and redevelopment for expansion for manufacturers utilizing brownfield sites.

## ENERGY SALES TAX EXEMPTIONS

Manufacturing firms located in one of New Jersey's 32 Urban Enterprise Zones may be exempt from paying sales tax on energy used at their facilities.

# WORKFORCE SUPPORT PROGRAMS

New Jersey Department of Labor & Workforce Development offers support to recruit and train your talent

## RECRUITMENT ASSISTANCE

NJLWD helps companies find talent through three programs.

1. New Jersey Career Connections links New Jersey job seekers and employers through interactive job banks and offers expert advice.
2. One Stop Career Centers has 30 regional offices in NJ.
3. Positive Recruitment Services have state representatives at regional Business Resource Centers that can help employers find workers.

## ON-THE-JOB TRAINING

Employers who hire eligible workers and train them for a specific job will receive reimbursements of 50% of wages for up to 26 weeks up to \$10,000. This grant is per individual and paid as a direct reimbursement to the company. An employer can hire multiple employees through this program, and each employee is eligible for the maximum benefit of \$10,000.

## REGISTERED APPRENTICESHIPS

NJLWD's registered apprenticeship is a proven solution for recruiting and training. It is a relationship between an employer and an employee during which the employee, or apprentice, learns a high-skill occupation. The registered apprenticeship model combines both classroom/related technical instruction (RTI) and on-the-job training. A sponsor, who can be an individual employer or an association of employers, operates the apprentice training programs on a voluntary basis.

# WHAT THEY SAY

Hear from CEOs with  
companies that call  
New Jersey home



“ [There is] a lot of manufacturing [being done] in New Jersey and it’s part of the state’s history... New Jersey is a great location for manufacturing because once you make something, you can get your goods [wherever they need to go] very quickly.”

Clifford Lindholm, III, President, CEO, Falstrom Company



“ There are many benefits of operating in New Jersey. We bring in paper from all over the world, so it’s important for us to be near the major ports. We also ship internationally, so we must be close to proficient transportation. We’re located less than an hour from airports and New York City.”

Lisa Hirsh, President, CEO, Accurate Box Company



“ We have experienced great success in New Jersey and attribute much of our momentum to our ability to recruit savvy and skilled employees from a diverse pool of talent.”

Suuchi Ramesh, Founder, CEO, Suuchi Inc.

# FAMILY FIRST

An ideal place to raise your family



#1 STATE TO RAISE A CHILD



#1 PUBLIC SCHOOL SYSTEM IN THE U.S.



#2 STATE TO LIVE IN THE U.S.



#2 STEM HIGH SCHOOL IN THE U.S.

# VALUES THAT MATTER

We welcome and celebrate diversity



PROUD TO BE  
THE 4TH MOST DIVERSE  
STATE IN THE U.S.



SAFE COMMUNITIES WITH  
STRICT GUN LAWS



A PROPONENT OF LGBTQ+  
AND WOMEN'S RIGHTS



100% CLEAN ENERGY GOAL  
BY 2035

# WHAT WE CAN DO FOR YOU



## MARKET INTELLIGENCE

Receive customized Request for Information (RFI) responses



## SITE SELECTION ASSISTANCE

Find and tour properties that meet your requirements



## STATE RESOURCES INFORMATION

Benefit from incentives and workforce development initiatives



## INTRODUCTIONS TO PUBLIC AND PRIVATE PARTNERS

Meet higher education experts and legal, staffing, and accounting providers



## PUBLIC RELATIONS SUPPORT

Publicize the good news after you locate in New Jersey



**GET TO  
KNOW US**

Choose New Jersey is New Jersey's leading nonprofit economic development organization. We stimulate job creation and attract capital investment with the aim of growing New Jersey's economy. We also market the state globally as the most ideal place in the United States to live, work, and play.

Our results since 2010:



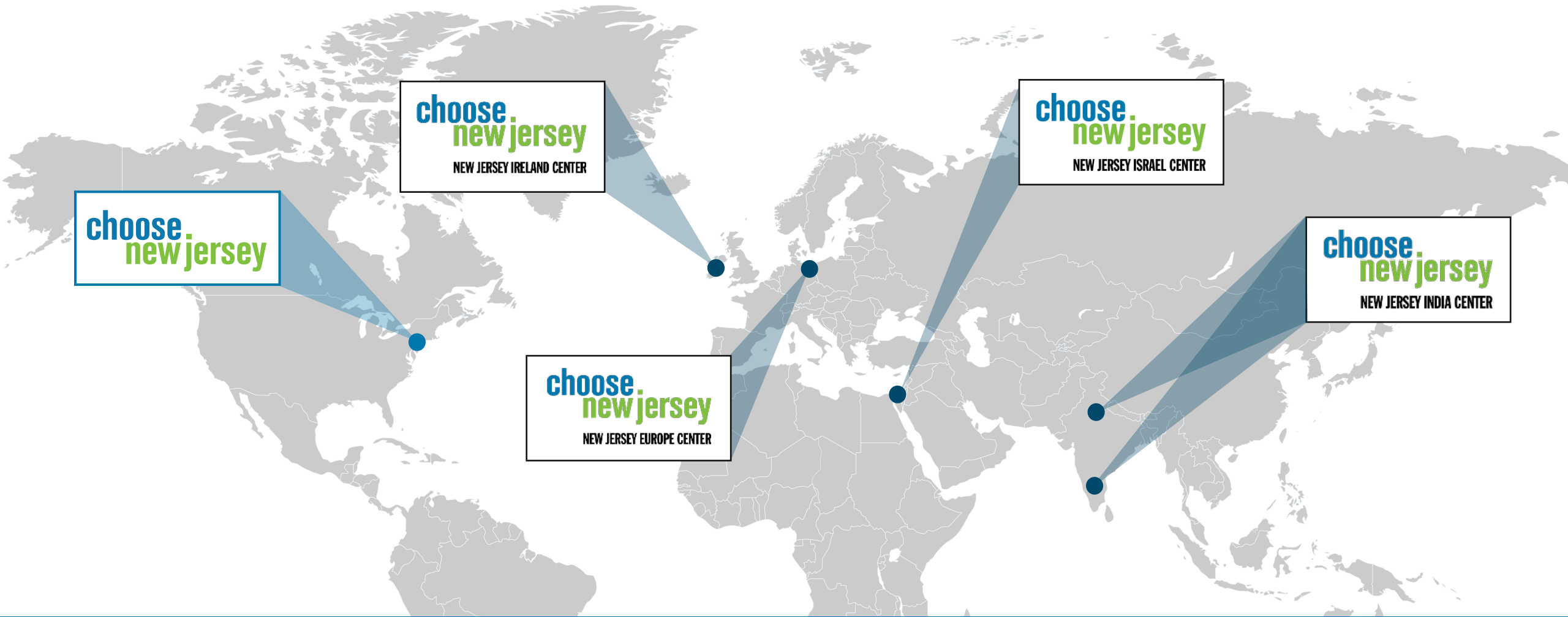
380  
COMPANIES  
LOCATED OR  
EXPANDED IN  
NEW JERSEY



52,000 NEW  
AND  
RETAINED  
JOBS



\$6.3B IN  
CAPITAL  
INVESTMENT



choose  
new jersey

choose  
new jersey  
NEW JERSEY IRELAND CENTER

choose  
new jersey  
NEW JERSEY ISRAEL CENTER

choose  
new jersey  
NEW JERSEY INDIA CENTER

choose  
new jersey  
NEW JERSEY EUROPE CENTER

# CHOOSE NEW JERSEY OFFICES

New Jersey is positioned to support expansion from anywhere in the world

# LET'S WORK TOGETHER

We've just scratched the surface of manufacturing in New Jersey. Ready to know more? We can help.



**RYAN FOX**

Senior Business Development Officer

Office: +1 609.269.2035

[rfox@choosenj.com](mailto:rfox@choosenj.com)

# OUR LEGACY OF EXCELLENCE CONTINUES WITH YOU

Ready to take your business to the next level? We're here to help.

**choose.  
newjersey**

CHOOSENJ.COM | 609-297-2200 |     