

A background graphic featuring a network of white lines connecting various circular nodes of different sizes and colors (white, light blue, and teal) on a green-to-teal gradient background.

CHOOSE NEW JERSEY

LIFE SCIENCES INDUSTRY GUIDE

choose
new jersey

LIFE SCIENCES INNOVATION

Launch, test, invent and make history in New Jersey



BIRTHPLACE OF
IMMUNOLOGY



HOME TO
THE CURE FOR
HEPATITIS-C



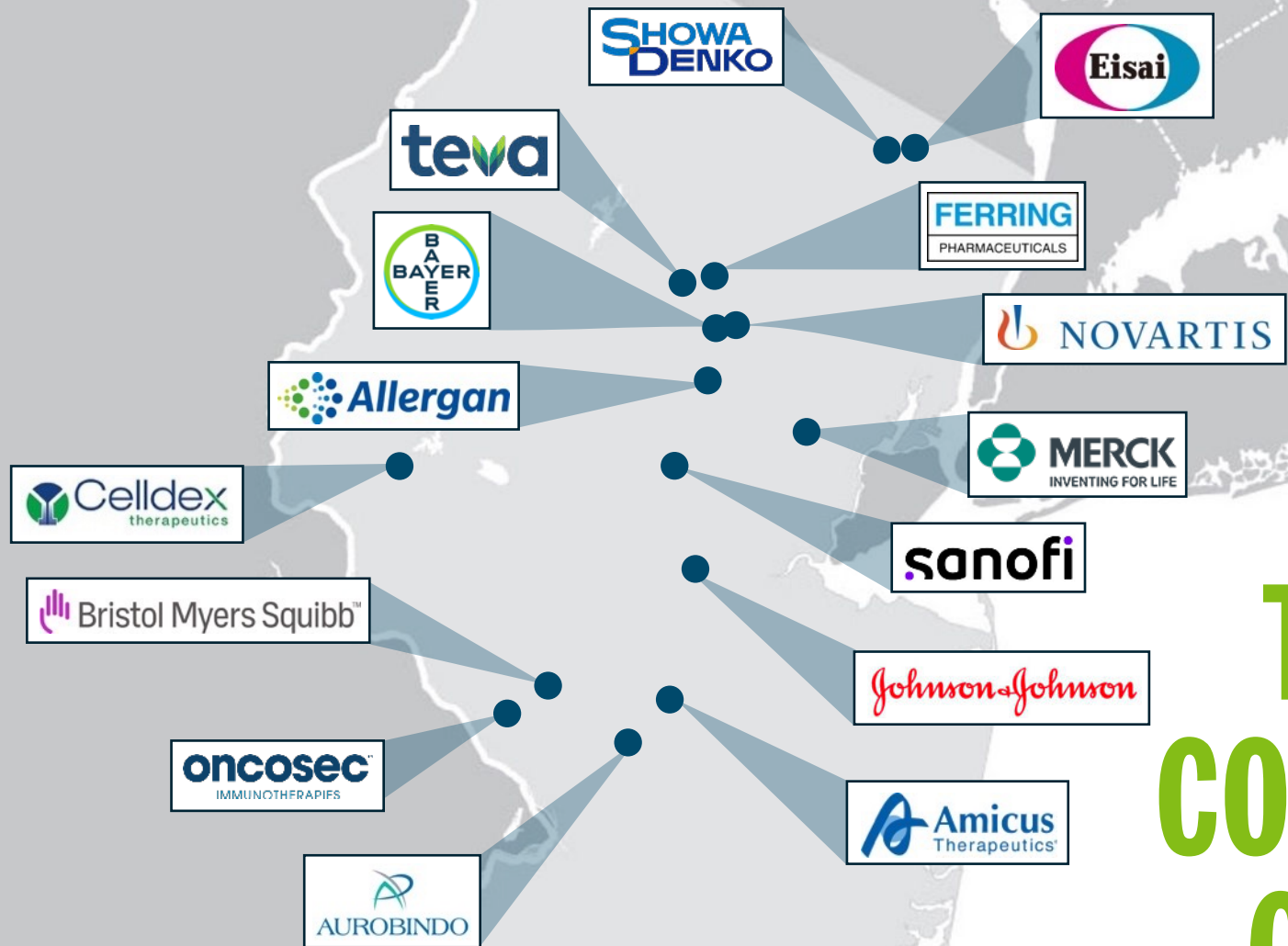
1ST EVER CAR-T
CELL THERAPY



1ST FDA APPROVED
3D PRINTED DRUG



1ST FDA APPROVAL
OF A DIGITAL
MEDICINE
SYSTEM



TOP LIFE SCIENCES COMPANIES ALREADY CHOSE NEW JERSEY

Be among your peers growing here

BY THE NUMBERS

Our success can be quantified

#1 concentration
of STEM
employees

#2 biotech
strength

#2 state for cancer
drugs in
development

#3 employed
biochemists &
biophysicists

#1 region for
NIH funding

#3 U.S. life sciences
cluster

14 of the top **20**
pharma companies

12 of the top **20**
medical device companies

12 of the top **22**
R&D companies

139 FDA-registered
biopharma
manufacturing
facilities -
#1 in the U.S.

39% of 2020 FDA
approvals

3,200+
life sciences establishments



NEWARK

Train times from Newark Penn Station

NEW YORK CITY
20 minutes

TRENTON
35 minutes

PHILADELPHIA
1 hour

WASHINGTON, D.C.
3 hours

BOSTON
4 hours

LOCATION

Discover a global gateway to greatness

38M Consumers within 150 miles/241 km

\$2.9T In GDP within 150 miles/241 km



WORKFORCE

We are the Smartest State in America for a reason



HIGHEST CONCENTRATION OF SCIENTISTS AND ENGINEERS IN THE U.S.



42% OF RESIDENTS HAVE BACHELOR'S DEGREES OR HIGHER

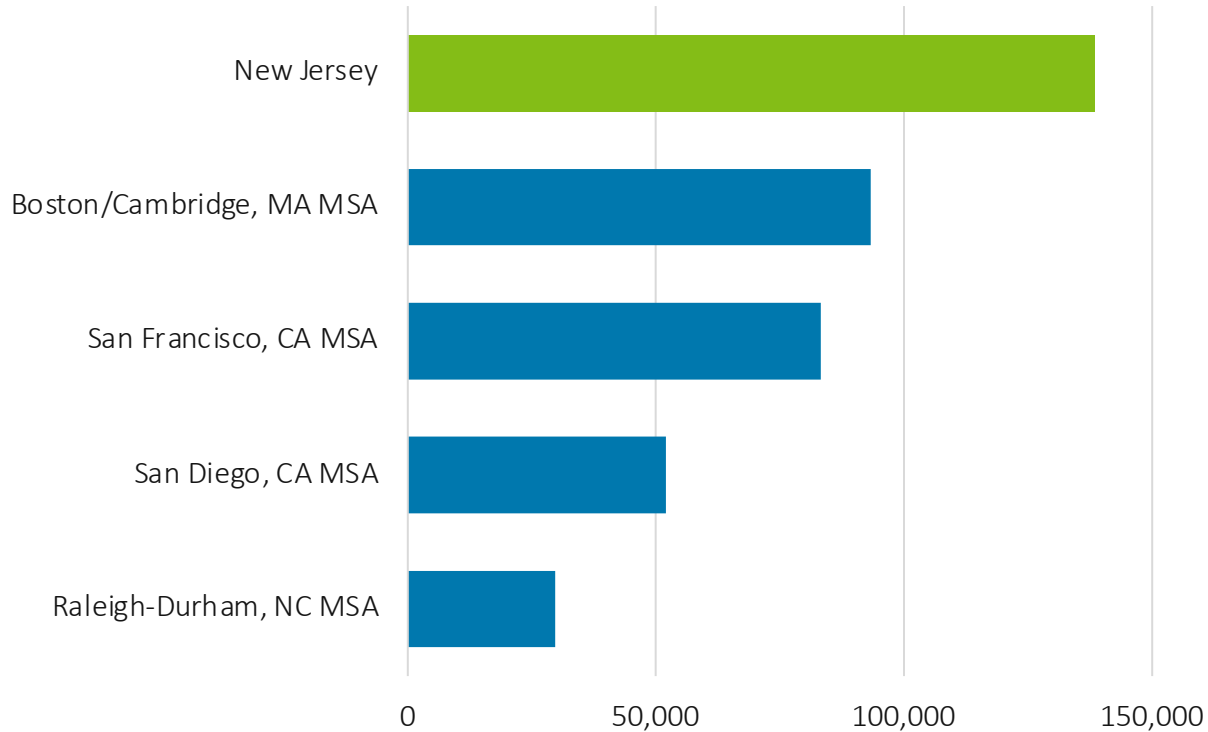


#2 HIGHEST CONCENTRATION OF STEM DEGREES AWARDED IN THE U.S.

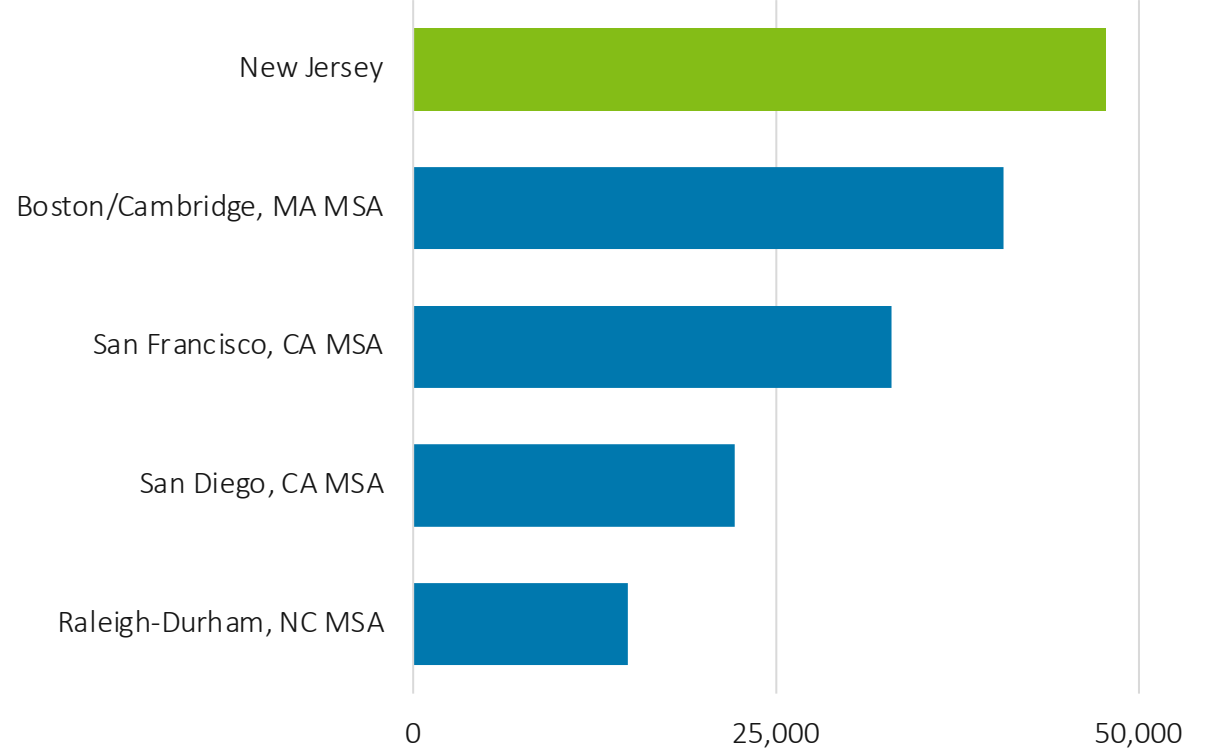
WORKFORCE

Hire from a robust labor pool

LIFE SCIENCES
MANUFACTURING LABOR POOL



LIFE SCIENCES
COMMERCIALIZATION LABOR POOL





HIGHER EDUCATION

Advancing life sciences discovery



- ▶ #1 university in the U.S. for 11 consecutive years



- ▶ \$750.8M in R&D spending & 1,300+ patents in 2019



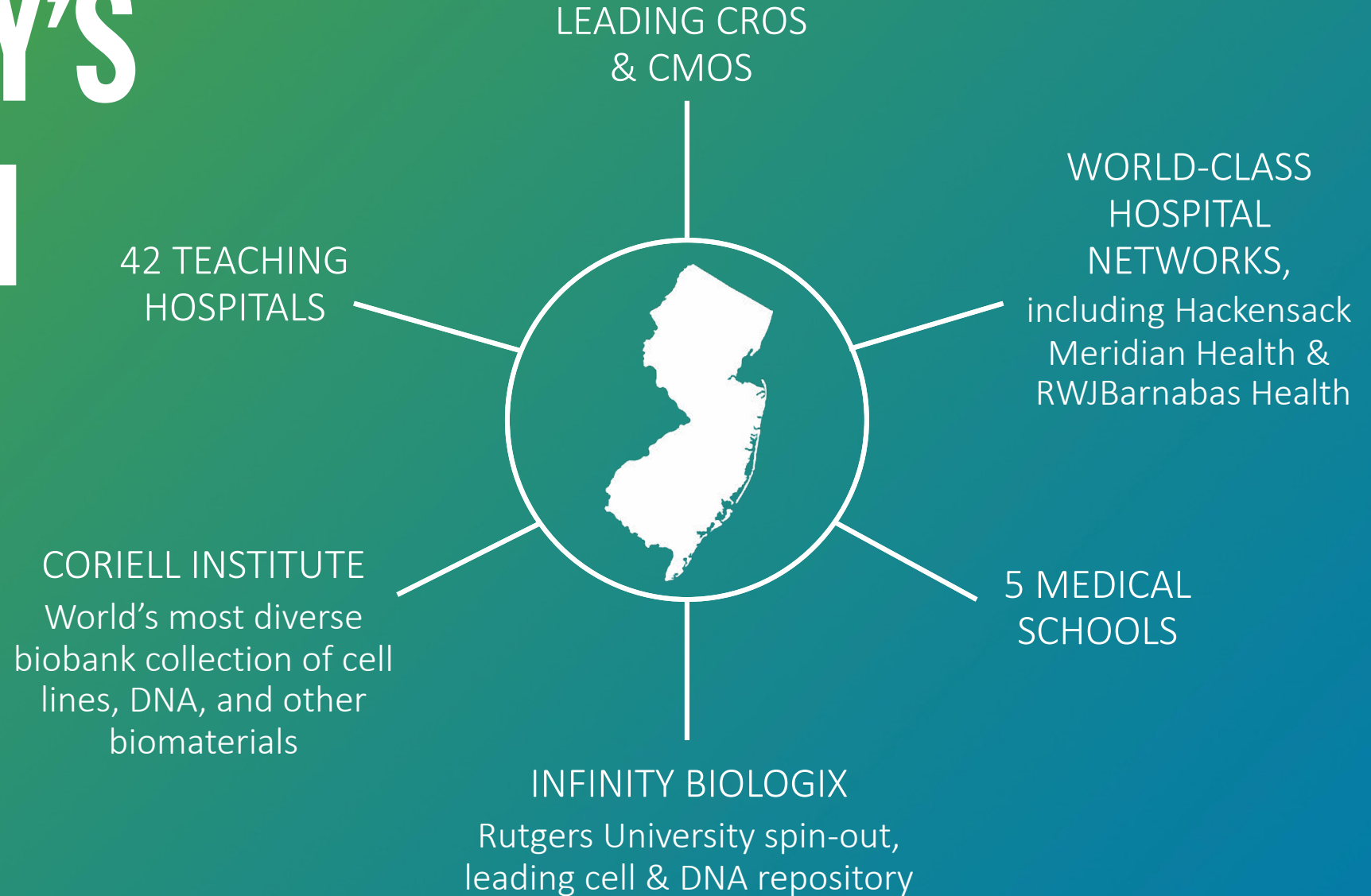
- ▶ Home to South Jersey Technology Park (SJTP)



- ▶ Established 6 industry-facing innovation divisions

NEW JERSEY'S ECOSYSTEM

A robust supply chain supporting
life sciences



INCUBATORS & RESEARCH HUBS

New Jersey can accommodate companies at every stage of growth



Princeton Innovation Center Biolabs

THE HUB IN NEW BRUNSWICK

1.7 million sq. ft. (158,000 sq. m) of mixed-use space across from the New Brunswick train station

Where academic researchers, corporate innovators and startups can collaborate

NJEDA'S NJ BIOSCIENCE CENTER

50 acres 202,343 sq. meters of incubator space, step-out labs, independent R&D facilities, build-to-suit sites

Park tenants include Allergan and Chromocell

ON3

Lab, research and office space on the reimagined Hoffman-LaRoche campus

Home to Hackensack Meridian School of Medicine and Quest Diagnostics

NJ CENTER OF EXCELLENCE

Research campus with 800,000 sq. ft. (74,000 sq. m) of R&D lab space

Home to PTC Therapeutics and Nestlé Health Science

PRINCETON INNOVATION CENTER BIOLABS

Coworking space with wet labs for early-stage companies

Located minutes from the Princeton University campus

BUSINESS ASSISTANCE

NJEDA offers funding and mentoring to help you grow

NJ FOUNDERS & FUNDERS

Held biannually, entrepreneurs meet with venture investors one-on-one to give honest, open feedback on business models, strategy and technology.

NJ COVEST FUND

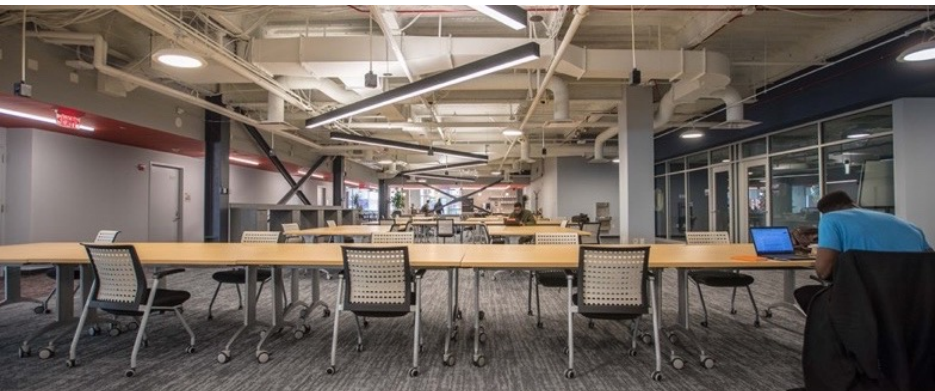
Seed funding between \$100,000 – \$250,000 is available to New Jersey life sciences companies to further commercialize their technology and scale revenues.

EDISON INNOVATION FUND

Structured as convertible debt, early-stage companies are provided growth capital to directly fund hiring key staff, product marketing and sales.

NJ IGNITE

Entrepreneurs are eligible for free rent support in qualified coworking spaces.



BIG MAGIC

Healthtech startup that moved into the VentureLink@NJIT in Newark with the support of NJ Ignite. The incubator offers them access to university staff and networking opportunities.

BUSINESS ASSISTANCE

NJEDA provides the support for your business to thrive

ANGEL INVESTOR TAX CREDIT PROGRAM

Investors in a qualifying New Jersey life science business may benefit from a 20% investment tax credit. An additional 5% bonus is available for a business located in a qualified opportunity zone, low-income community, or is certified as minority or women-owned.

TECHNOLOGY BUSINESS TAX CREDIT TRANSFER (NOL)

Enables qualified, unprofitable New Jersey-based biotech companies with fewer than 225 U.S. employees (including parent company and all subsidiaries) to sell a percentage of net operating losses (NOL) and R&D tax credits to unrelated profitable corporations.



SCYNEXIS

A biotech company that recently moved from North Carolina to New Jersey, credits funding from NOL as integral to bring its novel antifungal agent to market.



“Our objective in relocating to New Jersey was to be right in the middle of the action, where we could easily connect with, and recruit, top researchers and scientists and also provide an excellent location for our employees to raise their families.”

Dr. Marco Taglietti, CEO,
SCYNEXIS, Inc.

WHAT WE CAN DO FOR YOU



MARKET INTELLIGENCE

Receive customized Request for Information (RFI) responses



SITE SELECTION ASSISTANCE

Find and tour properties that meet your requirements



STATE RESOURCES INFORMATION

Benefit from New Jersey incentives and workforce development initiatives



INTRODUCTIONS TO PUBLIC + PRIVATE PARTNERS

Meet Higher Education experts and legal, staffing or accounting providers



PUBLIC RELATIONS SUPPORT

Publicize your good news after you locate in New Jersey

GET TO KNOW US

We guide businesses in establishing or expanding operations in New Jersey. We help companies find opportunities for growth and innovation.

We market New Jersey - The State of Innovation - around the world as the best place in the U.S. to live, work, play and do business.

Our results since 2010:



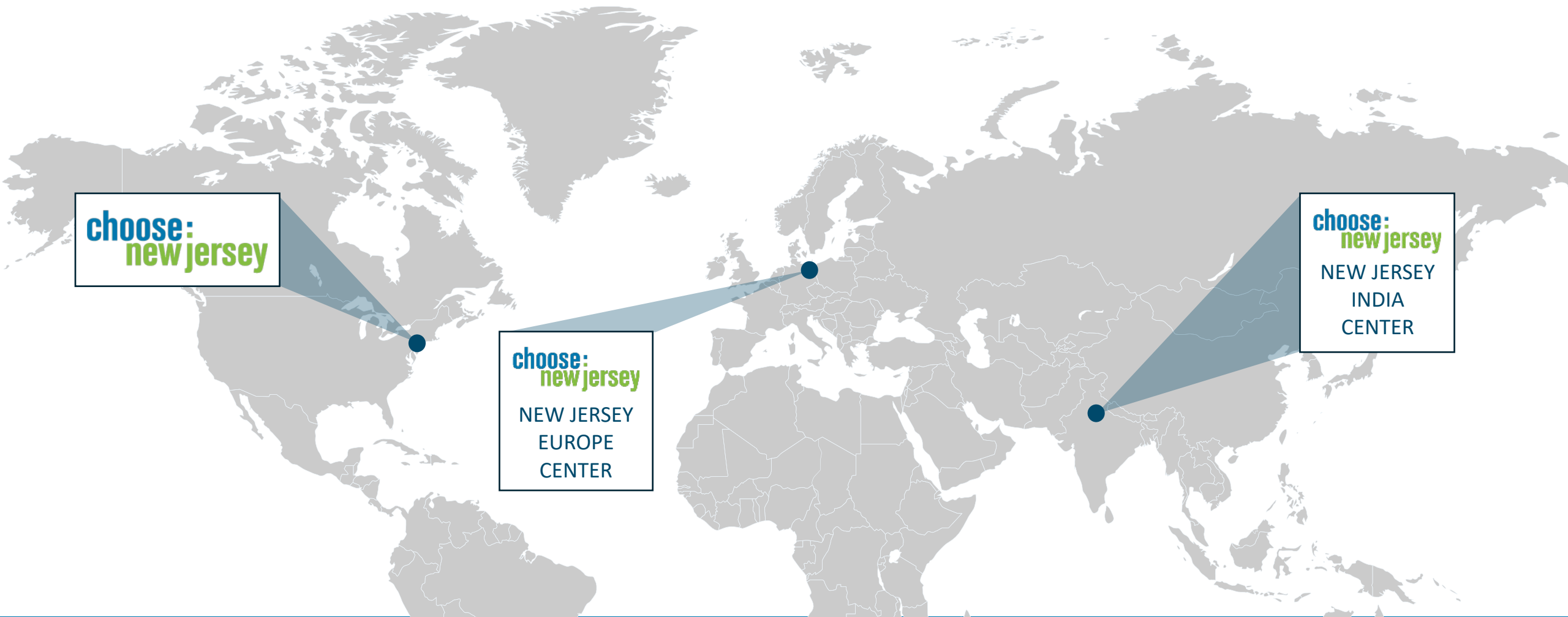
335 COMPANIES
LOCATED OR
EXPANDED IN NJ



39,000 NEW &
RETAINED JOBS



\$7.7B IN CAPITAL
INVESTMENT



choose:
new jersey

choose:
new jersey

NEW JERSEY
EUROPE
CENTER

choose:
new jersey

NEW JERSEY
INDIA
CENTER

CHOOSE NEW JERSEY OFFICES

A world of opportunity



LET'S GET STARTED

Ready to take your business to the next level? We're here to help.



BILL NOONAN

Chief Business Development Officer

Office: + 1 609.297.2192

wnoonan@choosenj.com

OUR LEGACY OF INNOVATION CONTINUES WITH YOU

choose.
newjersey

LEARN MORE AT [CHOOSENJ.COM](https://www.choosenj.com)